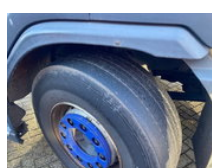
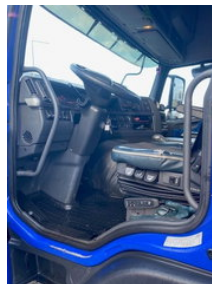
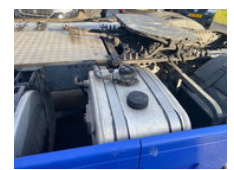




Volvo FM 420 globe hydrauliek

General features

Brand	Volvo
Model	FM
Subcategory	Cab over engine
Licence plate	56-BDB-4
Odometer reading	1.253.100km
Construction year	2013
Date of first registration	13-09-2013
Color	Blue
Condition	Used
General condition	Good
Fuel	Diesel
Emission class	Euro 5



Characteristics

Empty weight	7.836kg
Load capacity	12.164kg
GVW	20.000kg
Length	599cm
Width	250cm
Serial number	DB666047
Cylinder contents	12.777cc

Volvo FM 420 globe hydrauliek

Technical specifications

Number of axes	2
Axis configuration	4x2
Engine output	315kw

Accessories